

Isofrax[®] 1260C Modules are based on a revolutionary new fibre with a unique, patented silica-magnesia chemistry. Designed to be used in a wide variety of demanding, high temperature applications, Isofrax has very high solubility in simulated body fluids and meets the European and German regulatory requirements.

Isofrax 1260C Modules are prefabricated blocks formed from strips of Isofrax Blanket to give four densities of finished Modules: 150 kg/m³, 170 kg/m³, 190 kg/m³ and 210 kg/m³. These modules are specially designed to meet or improve the thermal insulation requirements of industrial furnaces. Isofrax 1260C Modules are produced with various anchoring systems to enable quick, easy and efficient installation in most furnace linings. Three types of Modules are offered: W.A is without an anchor system so can be tailored to a client's own anchorage method, RX2 offers an external fixing system with enhanced visibility and Anchor-Loc offers a centre fixing system. Isofrax 1260C Bonded modules consist of strips of Isofrax Blanket edge-stacked and glued together.



GENERAL CHARACTERISTICS

Isofrax 1260C Modules have these outstanding characteristics:

- High temperature stability (up to 1260°C)
- Low thermal conductivity
- Low heat storage
- Faster temperature cycling
- Energy saving
- Lower installation cost
- Easy repairs

Typical Chemical Analysis (Fibre wt. %)

SiO ₂	70.0 - 80.0
MgO	18.0 - 27.0
Trace	< 4.0
Loss on ignition	< 7%

TYPICAL PRODUCT PARAMETERS

Physical Properties

	Isofrax 1260C Bonded Module	Isofrax 1260C WA, RX2, Anchor-Loc**
Colour	Blueish-White	Blueish-White
Melting Point	> 1500°C	> 1500°C
Recommended Operating Temp. Limit*	1260°C	1260°C
Density	190kg/m ³	150,170,190,210kg/m ³
Thickness	38 - 100 mm	100 - 300 mm

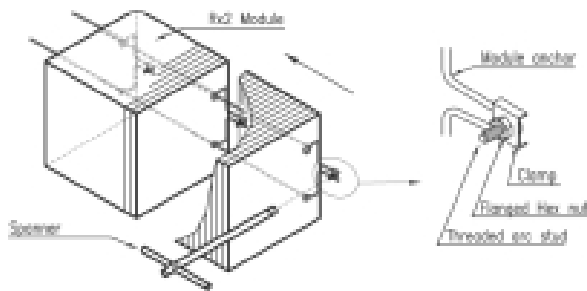
*dependent upon operating conditions.

**Thread-Loc or Weld-Loc

Thermal Conductivity Data (W/mK)

Density	150kg/m ³	170kg/m ³	190kg/m ³	210kg/m ³
400°C Mean Temp.	0.12	0.11	0.10	0.09
600°C Mean Temp.	0.16	0.15	0.14	0.13
800°C Mean Temp.	0.21	0.19	0.18	0.17
1000°C Mean Temp.	0.29	0.26	0.23	0.22
1200°C Mean Temp.	0.39	0.34	0.29	0.28

RX2 Attachment System



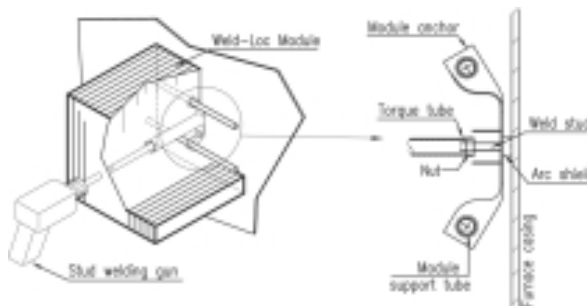
Prismo-Block RX2 Isofrax Modules

Provided with a patented module anchor in AISI 321, the RX2 attachment of the Isofrax Modules, was designed for a rapid installation on a pre-positioned stud pattern via the side fastener which is screwed on a stud pre-welded to the casing of the furnace. A complete set (Threaded arc stud, clamp, flanged hex stud) is supplied.

Advantages:

- Very high installation speed.
- Compatibility with backup insulation and Foil vapour barriers.
- Modules anchor compensates for variation in stud placement.

Weld-Loc Attachment System



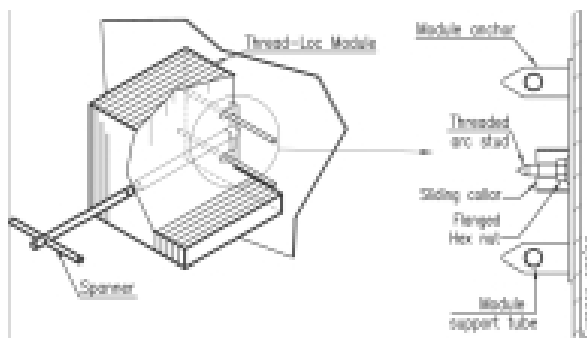
Weld-Loc Isofrax Modules

A special weld assembly is installed in each Weld-Loc Isofrax Modules. This stud assembly permits fusion the stud base to the furnace casings and allows a threaded fastener to be torqued on the stud, drawing the Isofrax Module to the casing plate.

Advantages:

- Easy and simplicity of installation.
- High Installation speed.
- Permits random placement of modules on the casing.

Thread-Loc Attachment System



Thread-Loc Isofrax Modules

Provided with an all-thread weld stud and flanged nut, the Thread loc Isofrax Module is designed for installation on a pre-positioned stud pattern.

Advantages:

- Compatibility with backup insulation and vapor foil barriers.
- Modules anchor compensates for variation in stud placement.
- Access to the welded fastener for full testing before the module is installed

Thermal Profile Tables

Modules 150kg/m³

Hot Face Temperature	Insulation Thickness (mm)	100	150	200	250	300
		Cold Face Temperature				
800°C		91°C	73°C	62°C	56°C	50°C
900°C		-	81°C	69°C	62°C	58°C
1000°C		-	-	78°C	69°C	64°C

Modules 170kg/m³

Hot Face Temperature	Insulation Thickness (mm)	100	150	200	250	300
		Cold Face Temperature				
900°C		102°C	80°C	69°C	62°C	55°C
1000°C		-	89°C	75°C	68°C	61°C
1100°C		-	-	82°C	74°C	66°C

Modules 190kg/m³

Hot Face Temperature	Insulation Thickness (mm)	100	150	200	250	300
		Cold Face Temperature				
1000°C		108°C	85°C	73°C	64°C	59°C
1100°C		-	94°C	79°C	70°C	64°C
1200°C		-	-	86°C	76°C	69°C

Modules 210kg/m³

Hot Face Temperature	Insulation Thickness (mm)	100	150	200	250	300
		Cold Face Temperature				
1000°C		105°C	84°C	72°C	64°C	58°C
1100°C		-	92°C	78°C	69°C	63°C
1200°C		-	-	85°C	75°C	68°C
1260°C		-	-	-	81°C	74°C

Any new and/or special use of these products, whether or not in an application listed in this datasheet, must be submitted to our technical department for their prior written approval.

Information contained in this publication is for illustrative purposes only and is not intended to create any contractual obligation.

Typical Applications

Metallurgy

- Forge furnace
- Reheat furnace
- Annealing furnace
- Holding furnace

Petrochemical

- Heaters
- Distillation heater
- Ethylene heater

Power-Gen

- Exhaust duct
- Stack
- Diverter
- Boiler
- H.R.S.G.

Ceramic

- Earthenware kiln
- Tunnel/intermittent kilns
 - Tile
 - Bricks
 - Biscuit
- Sanitaryware kilns

Availability

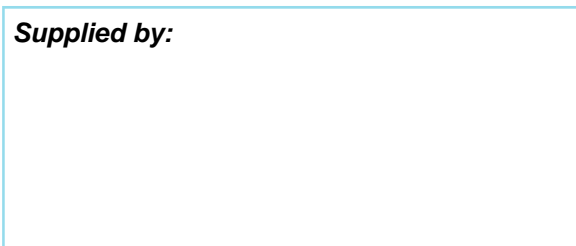
Products	Bonded Modules	WA, RX2, Anchor-Loc
Length	300 mm	300 mm
Width/Compression	300 mm*	300 mm*
Density	38,50,70,100 mm*	100,125,150,175,200,225,250,270,300 mm*
Thickness	190kg/m ³	150,170,190,210kg/m ³
Type	Edge-stacked	Edge-stacked or Folded

Other thicknesses/sizes may be available on request subject to order.

Packaging

	150kg/m ³	170kg/m ³	190kg/m ³	210kg/m ³
Anchors				
RX2/WA	Plastic bag	Plastic bag	Plastic bag	Medium
Weld-Loc	Carton plates	Carton plates	Carton plates	Medium

Supplied by:



Contact Numbers

Website: www.unifrax.com.au

PO Box 7
326 Settlement Rd
Thomastown VIC 3074
Ph: 03 9463 0000
Fax: 03 9465 0497
Email: info@unifrax.com.au

Handling Information

A Material Safety Datasheet is available for this product.

Customer Service Toll Free number:
1300 797 888



Information contained in this publication is for illustrative purposes only and is not intended to create any contractual obligation.

Further information and advice on specific details of the products described should be obtained in writing from a Unifrax Corporation company (Unifrax Benelux, Unifrax España, Unifrax France, Unifrax GmbH, Unifrax Italia, Unifrax Limited, Unifrax Australia).

Unifrax maintains a continuous programme of product development and reserves the right to change product specification without prior notice.

Therefore, it remains at all times the responsibility of the customer to ensure that Unifrax materials are suitable for the particular purpose intended.

Similarly, insofar as material not manufactured nor supplied by Unifrax are used in conjunction with or instead of Unifrax materials, the customer should ensure that all technical data and other such information relating to such materials has been obtained from the manufacturer or supplier. Unifrax accepts no liability arising from the use of such materials.

All sales made by a Unifrax Corporation company are subject to that company's Terms and Conditions of Sales, copies of which are available on request.